



## Maschinensteuerung

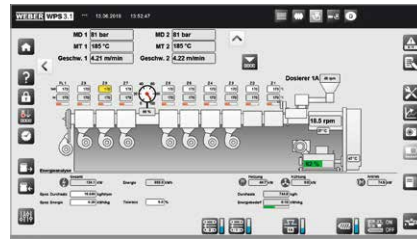
Machine controller  
Commande de de machines  
Control de la máquina

# WPS



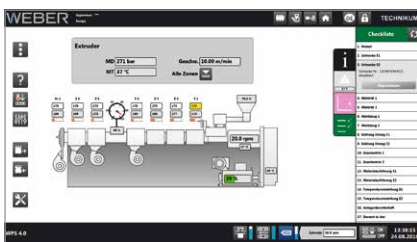
### Service tool

- // First steps to self help
- // Representation through images, videos and text
- // Derived from decades of experience in service
- // Networked with operating manual and circuit diagrams



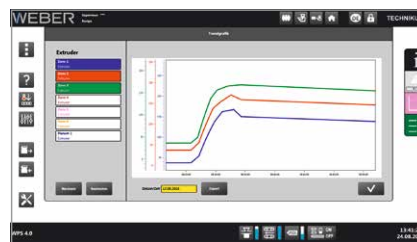
### Line networking and optimisation

- // Energy monitoring
- // Preset of water temperature for the cooling tank
- // Preliminary calculation and optimisation of the line configuration (energy, tensions in the pipe)
- // Coupling via Euromap, OPC UA



### BDE coupling and intelligent checklists

- // Machine recognises operator and process
- // Process data are synchronised with BDE
- // Operator receives situational messages for setup and starting the process (checklists)
- // Customer can expand and adapt the checklists as desired



### Intuitive operation

- // Clear representation of the basic functions
- // Situational display of details
- // Machine status can be seen even from a distance of 3 m

- Bei den in unseren Katalogen und Prospekten enthaltenen technischen Angaben handelt es sich um unverbindliche Richtwerte. Um zugesicherte Eigenschaften handelt es sich nur dann, wenn sie in unseren jeweiligen Auftragsbestätigungen ausdrücklich genannt sind.
- The technical details given in our catalogues and leaflets are examples only and are not guaranteed unless agreed and specified in any relevant Order Confirmation.
- Les informations techniques contenues dans nos catalogues et prospectus sont données à titre indicatif uniquement et sans engagement de notre part. Ces données ne sont garanties que lorsque expressément précisées dans nos confirmations de commande respectives.
- Las especificaciones contenidas en nuestros catálogos y prospectos, se tratan de valores en bruto sin compromiso. Las características aseguradas lo son únicamente cuando estén citadas expresamente en nuestra respectiva confirmación de pedido.